

The background of the entire image is a repeating pattern of light gray hexagons with dark gray outlines, creating a honeycomb effect. The hexagons are arranged in a staggered grid. The central text is set against a solid medium gray background.

LUMENCRAFT

LIGHTING SOLUTIONS



Facebook.com/LumencraftTH

LINE ID : @LUMENCRAFT

www.lumencraft.lighting

LUMENCRAFT

LIGHTING SOLUTIONS

www.brilliantz.co.th

LUMENCRAFT COMPANY PROFILE

LIGHTING SOLUTIONS



Brilliantz is a leading supplier changing the world of lighting with the latest green technology, energy saving lighting and controls, renowned for innovative and intelligent lighting solutions.

Brilliantz products are proven in commercial, municipal, and government installations throughout the Thailand. Our extensive product portfolio includes architectural, commercial, lighting, residential and industrial.

Brilliantz has a well established history of introducing many innovative products which have shaped today's lighting industry. Our experience in energy efficient lighting stems from many years of industry renowned research and development, working closely with specifiers, utilities and associations to develop new lighting products.

OUR MISSION

The mission of Brilliantz is to be the leading provider of innovative, high quality lighting fixtures and systems to commercial, municipal and utility markets. We strive to deliver consistently superior value to our customers and their clients. This commitment permeates everything we do, driving us to continuously improve our products and processes to fulfill the need for quality lighting solutions. Brilliantz offers an exceptionally strong portfolio of quality products, encompassing a comprehensive selection to meet a wide variety of indoor and outdoor lighting applications. At the core of our new product development is the commitment to utilize the very latest lighting technologies that improve lighting quality, improve efficiency, and enhance the environment through reduced energy consumption.

OFFER SERVICES

Brilliantz is committed to a Customer First attitude and provide excellent service in fulfilling customer needs. We resolve to provide outstanding service before and after the sale, and take pride in maintaining long term relationships with our customers. From product selection and specification through delivery and beyond, Brilliantz is focused on providing the information, advice and product when needed. To sum up, our company strives to be easy to do business with. At Brilliantz our people apply their lighting experience and expertise to fulfill customer needs. Combining that capability with the strength of our product line and expert agency sales force, you can count on Brilliantz to support you for all your lighting needs.

LUMENCRAFT LIGHTING KNOWLEDGE

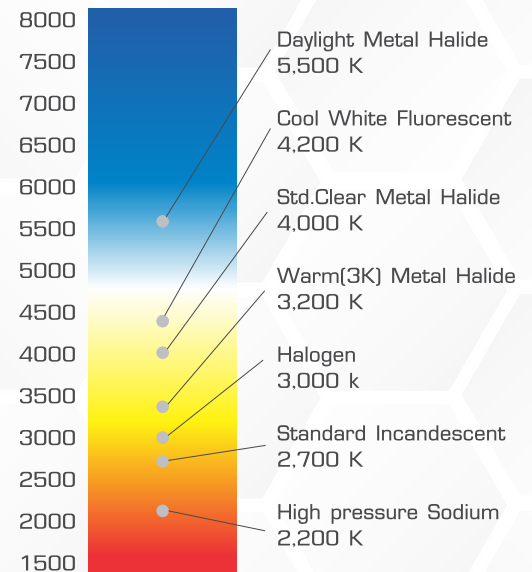
LIGHTING SOLUTIONS

Color Rendering Index

The Color Rendering Index (CRI) is the relative ability of a light source to replicate colors generated by a reference light source of the same color temperature. It is measured as a number between 0 and 100.

Color Temperature

LED color temperature measures the color of an LED light bulb. It defines the amount of pure white, yellow, red and blue in a light. Another way to think of the color temperature is how 'warm' or 'cool' is the white LED light bulb. Color temperature is measured in degrees Kelvin and is a measure of the part of the color spectrum that is found in light. A simple way to think about this is to compare the light from the sun from sunrise to sunset. At noon the light is bright and white, even more so nearer the equator. At sunrise and sunset the light takes on a more yellow or even red tint. Lower color temperatures will have more yellow, and higher color temperatures will go from yellow, to pure white and eventually to bluish, like you might find on some of the blue tinted headlights on cars.



Warmwhite, Softwhite

The standard color of incandescent bulbs.



Coolwhite, Neutral, Brightwhite

Good for kitchens and work spaces.



Natural or Daylight

Good for reading

LUMENCRAFT LIGHTING KNOWLEDGE

LIGHTING SOLUTIONS

I.E.S. RECOMMENDED LIGHTING LEVEL

BAKERIES		MULTI-PURPOSE SPORTS HALLS		SHOPS	
General	300	Badminton - National and international	300	Self-service	500
CAR PARKS - INDOOR		Gymnasium - General	500	Supermarkets	500
Underground	30	Tennis - National and international	750	Showrooms - car	500
Multi-storey - parking floors	30	General - Changing rooms showers	150	general	500
- ramps	50	locker rooms			
WAREHOUSE AND BULKSTORES		OFFICES		HOMES	
Large, material, loading bays	150	General office with mainly clerical tasks and occasional typing	500	Living rooms - general	50
Small material, racks	200	Deep - plan general offices	750	-casual reading	150
Packing, despatch	500	Business machine and typing offices	250	Studies - desk and prolonged reading	300
Issue counters	500	Filling rooms	300	Bedroom - general	50
TRANSPORT TERMINAL BUILDINGS		Conference rooms	750	- bedhead	150
Reception areas (desks), customs and immigration halls	500	Executive offices	500	Kitchens - working areas	300
Waiting areas	200	Banking halls - working spaces	500	Bathrooms	100
HOTELS		- public spaces	300	Halls	150
Entrance halls - general	300	Computer rooms	500	Stairs	100
reception, cashier	300	Drawing offices - drawing boards	750	Garages	50
Public rooms - coffee bars	150	- reference tables	500		
- dining rooms, grill rooms,		and general			
restaurants general	100	- print rooms	300		
- cloakrooms	150				
- cellars	150				

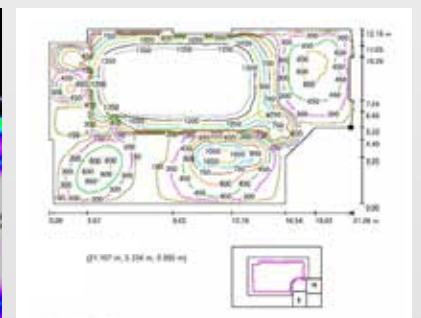
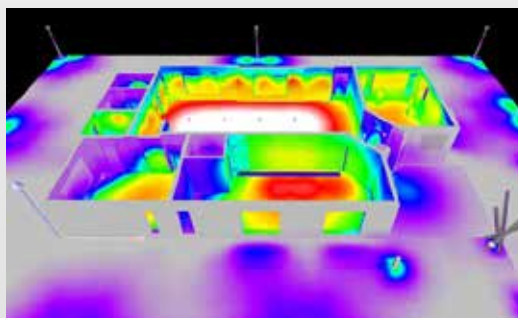
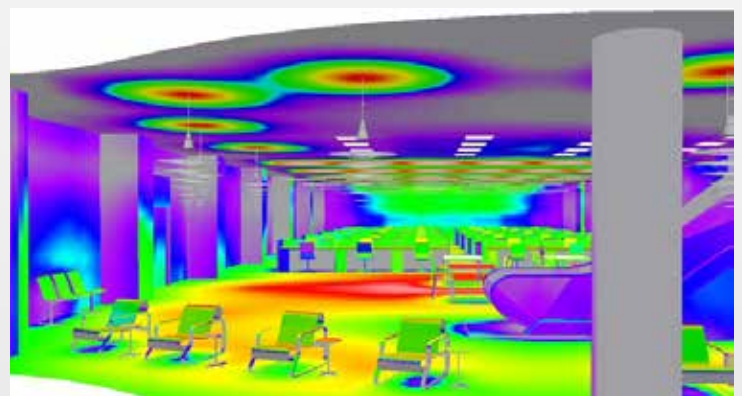
IP Ratings Chart

IP	EXAMPLE	SOLID PROTECTION	IP	EXAMPLE	LIQUID PROTECTION
0		No protected	0		No protected
1		Protected against a solid object greater than 50 mm, such as a hand	1		Protected against vertically falling drops of water. Limited ingress permitted
2		Protected against a solid object greater than 12.5 mm, such as a finger	2		Protected against vertically falling drops of water w/ enclosure tilted 15 from vertical. Limited ingress permitted
3		Protected against a solid object greater than 2.5 mm, such as a screwdriver	3		Protected against sprays to 60 from the vertical. Limited ingress permitted
4		Protected against a solid object greater than 1.0 mm, such as a wire	4		Protected against water splashed from all directions. Limited ingress permitted
5		Dust Protected. Limited ingress of dust permitted	5		Protected against jets of water. Limited ingress permitted
6		Dust Tight. Zero ingress of dust permitted	6		Protected against strong jets of water. Limited ingress permitted
			7		Protected against the effects of immersion between 15 cm and 1 m
			8		Protected against long periods of immersion under pressure

LUMENCRAFT LIGHTING DESIGN SERVICE

LIGHTING SOLUTIONS

Our services range from concept development to fully documented lighting design, from custom fixture design to designing with only standard products. We have the resources and expertise to run complex illumination calculations, daylighting analysis, life cycle analysis, and cost comparative studies..



LUMENCRAFT

LIGHTING SOLUTIONS



PROJECT REFERENCE

- Hotel
- Luxury Condominium
- Residence
- Community Mall & Showroom
- Restaurant





GRANDE CENTRE POINT PATTAYA



GATEWAY BANGSUE



TERMINAL 21 ASOK



ZPELL



ADIDAS



HILTON BANGKOK



ASHTON CHULA



M GALLERY by SOFITER



CONRAD BANGKOK



AVADINA HILLS



KRUNGSRI PLOENCHIT TOWER



GRANDE CENTRE POINT SUKHUMVIT 55



TERMINAL 21 PATTAYA



GRAND MERCURE PATONG



HOLIDAY INN BANGKOK



DOUBLE TREE by HILTON



MARRIOTT MARQUIS QUEEN'S PARK



YUNOMORI ONSEN SPA



FITNESS FIRST

RESIDENTIAL LIGHTING



COMMERCIAL LIGHTING



LANDSCAPE LIGHTING



INDUSTRIAL LIGHTING



LED DOWNLIGHT

RECESSED DOWNLIGHT



SURFACE MOUNTED DOWNLIGHT



LED DOWNLIGHT

WALL WASHER DOWNLIGHT



MULTI-CHANNEL DOWNLIGHT



LED MINI DOWNLIGHT



LED TRACK LIGHT & SPOT LIGHT

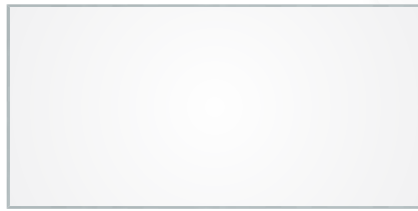
LED TRACK LIGHT



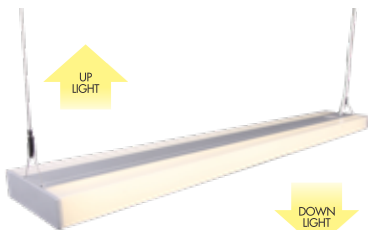
LED SPOT LIGHT



PANEL LIGHT

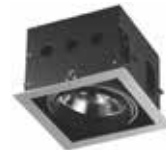


OFFICE LIGHT



RETROFIT FIXTURE & LAMPS

INDOOR



OUTDOOR



LED STRIP LIGHT *Stripmaster*

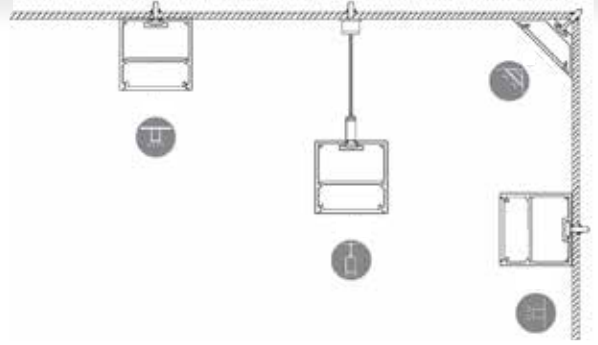
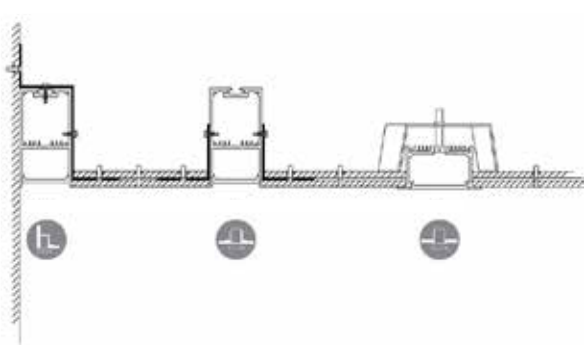
Basic specification of Stripmaster

Working voltage:	DC 12V , DC 24V
PCB Color:	white , brown ,black
PCB Width:	5mm,6mm,8mm,10mm,12mm,15mm,20mm,24mm, 28mm
LED Chip:	High brightness 3528, 3014, 135, 335, 5050, 5630 SMD LED
LED Quantity: (leds/m):	30 (5050, 3528), 48 (3528), 60 (5050, 3528, 335), 78 (3528), 96 (5050, 335), 120 (5050, 3528), 180 (3528), 240 (3528), 360 (3528)
LEDColor:	Red ,blue, green, yellow, white, warm white, orange, pink ,purple ,RGB
Color Temperature	Warmwhite: 2400K, 2700k, 3000k, 3500K White : 4000K, 5000K, 6000K, 7000K, 8000K, 9000K, 12000K, 20000K
IP Level Available:	IP20, IP65, IP67, IP68
Accessories:	Glue, End-caps , Clip, Connector, RGB Controller, Data Amplifier, DMX Controller, LED Dimmer
Special LED Strip:	Color Temperature Adjustable Series, Bi-color LED strip
The best connection way:	Connect both ends of strips to power supply, use controller and amplifier to control and dimming.
Working temperature:	-30°C~50°C
LED life span:	≥50000 hours



ALUMINUM PROFILE FOR *Stripmaster*

PROFILE INSTALLATION



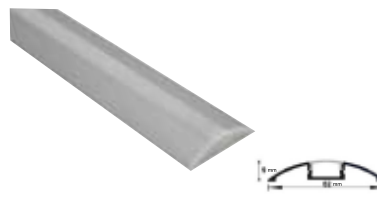
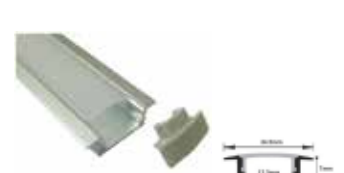
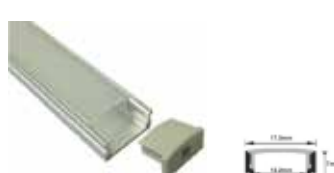
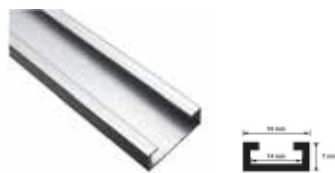
- Recessed Linear Lighting Fixture

- Surface Mounted Linear Lighting Fixture

- Pendant Linear Lighting Fixture

- Recessed Linear Lighting Fixture

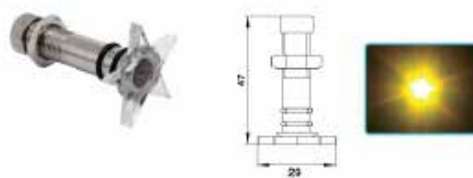
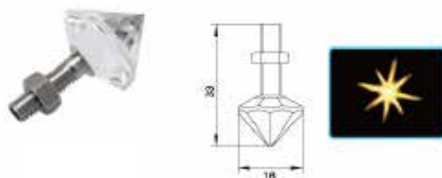
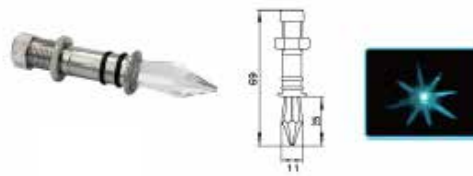
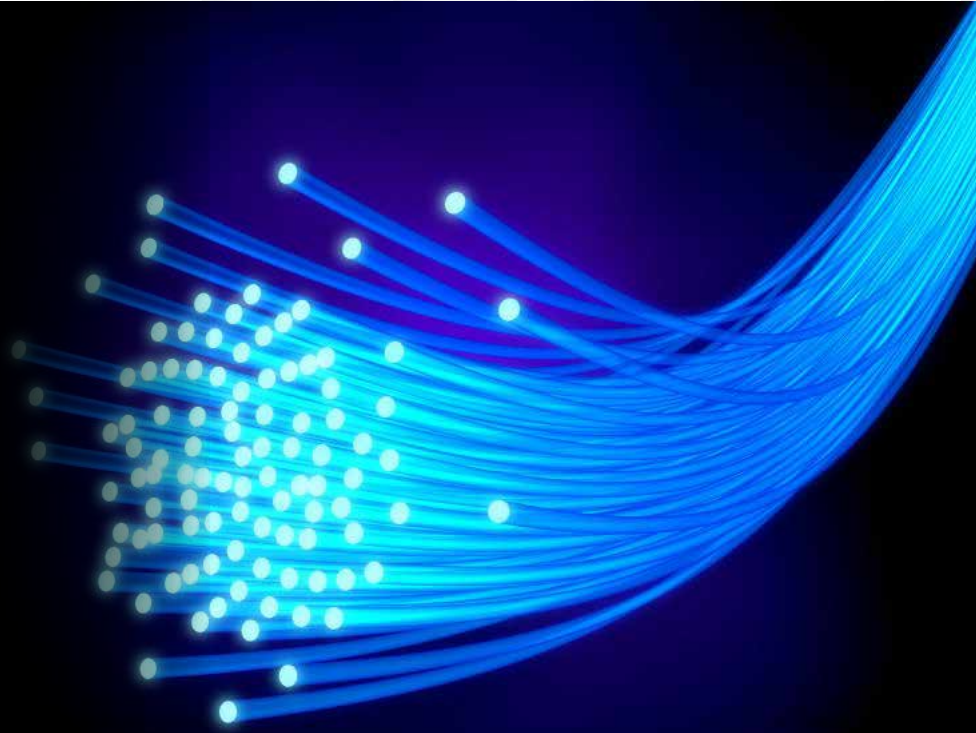
- Corner Mounted Linear Lighting Fixture



FIBER OPTIC

Fiber Optic Lighting

Fiber Optic Lighting is a new creative lighting. It is unreplaceable because of its special design and lighting effect. It is widely used at hotel, night club, bars, etc. Customer's designs are welcome.



Main Functions:

- 8 Colors
- Color can be selected or autorun
- UV protected
- Over-heated protection

SPECIAL LIGHTING

COOLER LIGHTING



JEWELRY LIGHTING



For jewelry showcases, the appearance of the products is of the utmost important. No matter if the products are gold, platinum, precious stones, pearls, silver, or steel- the products must appear to be of the highest quality. High-brightness and high-color rendering are just two requirements to achieve this goal. Efficient lighting with precision distribution mounted throughout the display case should be carefully arranged in just a way to give showcase all the facets of these exceptional products and give them the best visual appeal.



OUTDOOR LUMINAIRE

LED INGROUND



LED STEP AND WALL LIGHT



OUTDOOR LUMINAIRE

LED SPOTLIGHT



LED PROJECTION LIGHT

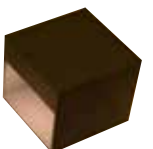


OUTDOOR LUMINAIRE

LED UNDER WATER LIGHT



LED BOLLARD



OUTDOOR LUMINAIRE

LED FLOODLIGHT



LED STREET LIGHT



LED Highbay

